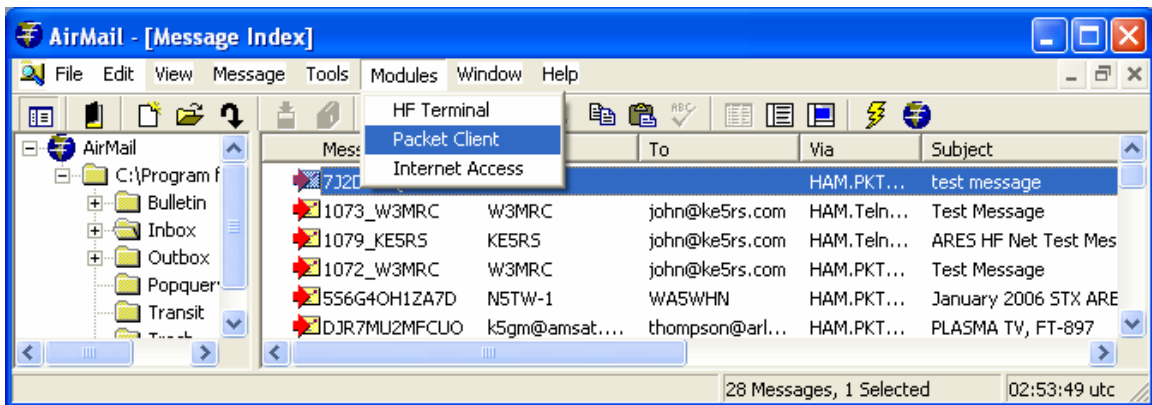


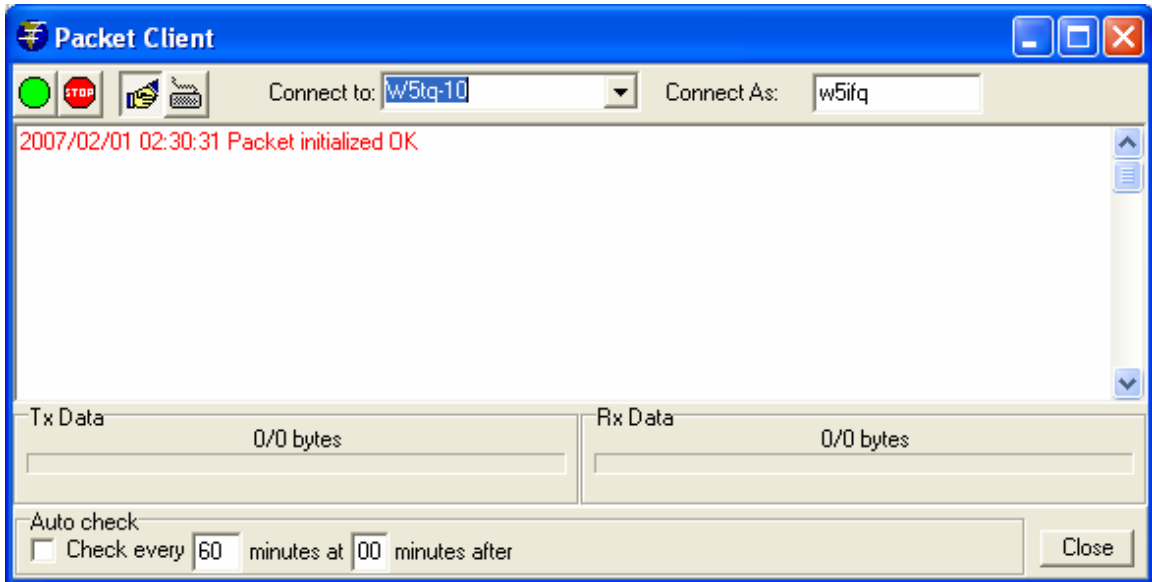
ARCHES WINLINK AIRMAIL OPERATION 9/13/2009 W5IFQ

General Description: The following instructions should be followed to send AirMail e-mail to CTECC or any other Internet address. If the Internet is down at CTECC you can still send e-mail to CTECC and any other AirMail stations that can reach CTECC by radio.

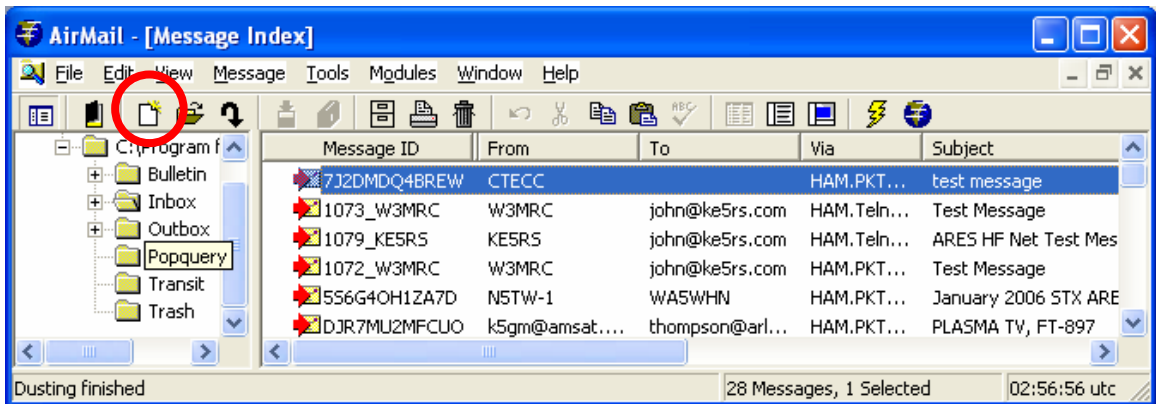
1. Set the FM transceiver to 145.73 or 145.07 MHz and high power.
2. Turn on the 9612+ TNC (should already be on).
3. Turn on the Desktop computer.
4. Double-click the AirMail Icon on the desktop.
5. Verify that the TNC and computer are working together by opening the Packet Client Terminal Window:



6. Pull down Modules/Packet Client. The terminal window should open and after a few moments, "Packet Initialized OK", should appear in that window.



7. Enter in the Terminal Window one of the following:
**Connect To: W5TQ-10 on 145.73 MHz or
W5TQ-12 on 145.07 MHz**
**Connect As: W5OEM-SSID. (Substitute your –NN in the
SSID position of the call.) Note that tactical calls are not
allowed in AirMail but SSID’s do pass through.**
8. Go back to the main AirMail Window and click on the
“Format a New Message” Icon.



Cancel the Address book and enter the following into the e-mail form:

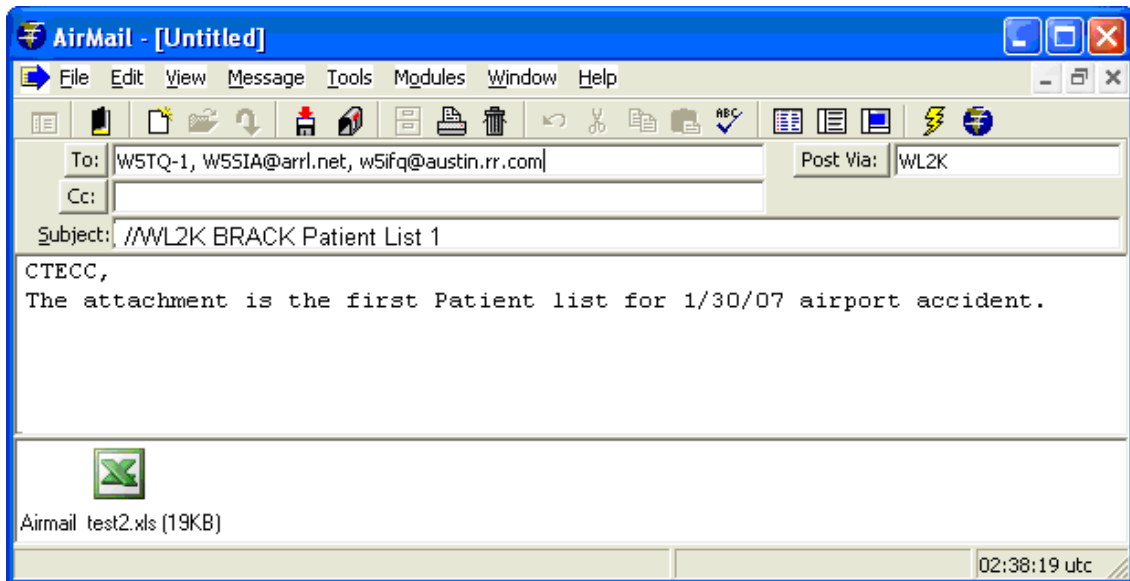
**To: valid internet or Winlink e-mail address(s)
separated by commas.**

Subject: //WL2K then add subject
Post Via: WL2K

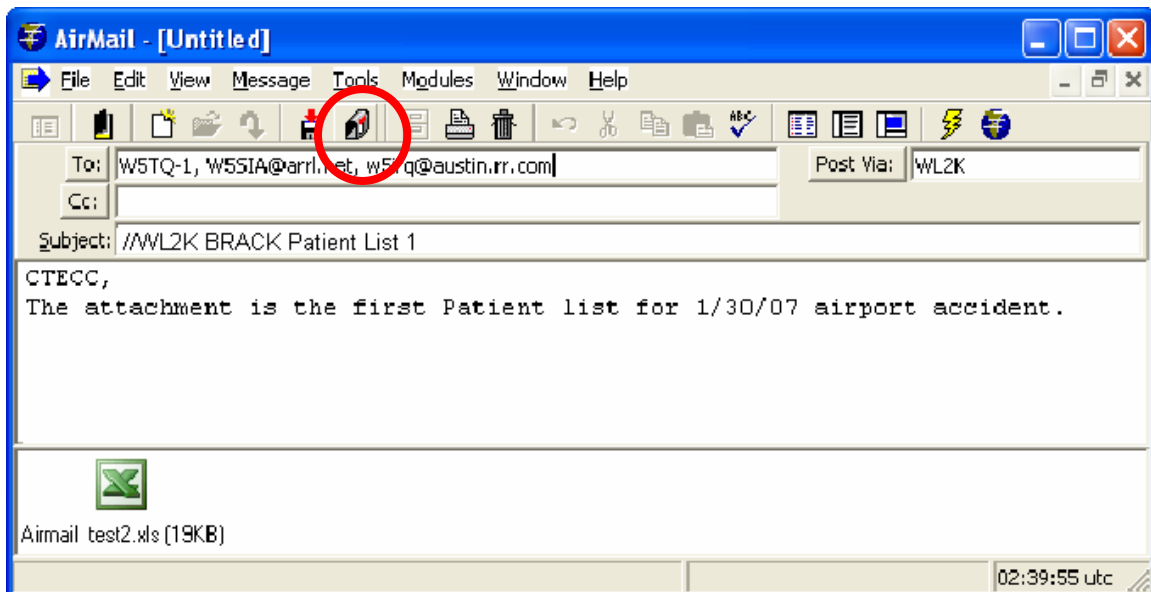
Note: E-mail address of CTECC is W5TQ-1

9. Attach any files: File/Attachments

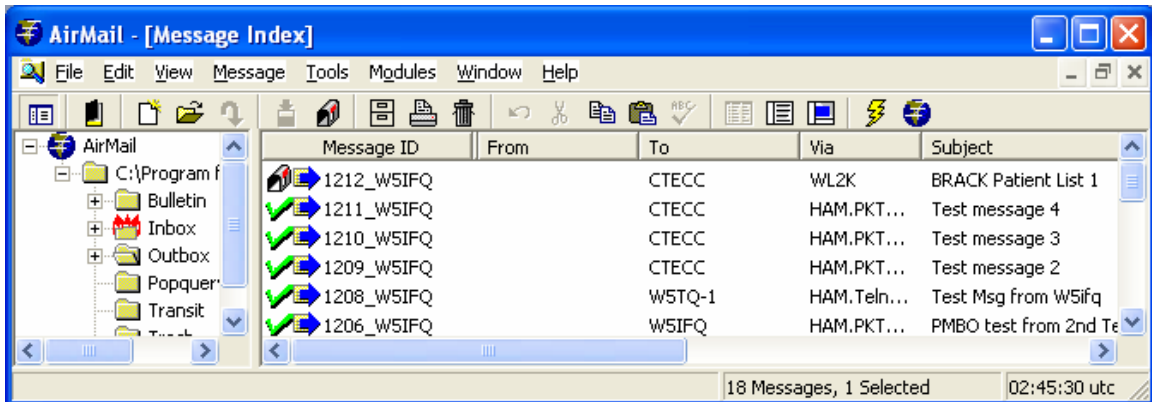
10. Add any comments, like “see attached file....”



11. Post message by clicking on the mailbox Icon.



12. Confirm that message is ready to send by looking in the “Out” box. Look for little mail-box in left column for your new message.



13. Go back to the Terminal window and confirm:

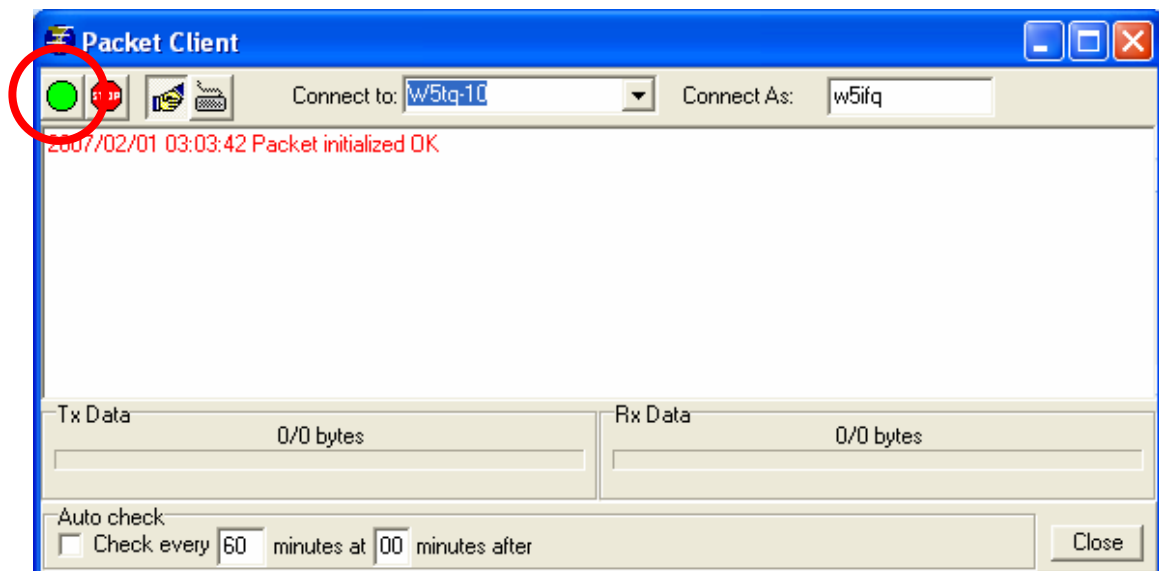
Connect To: W5TQ-10 (for 145.73 MHz) or

W5TQ-12 (for 145.07 MHz)

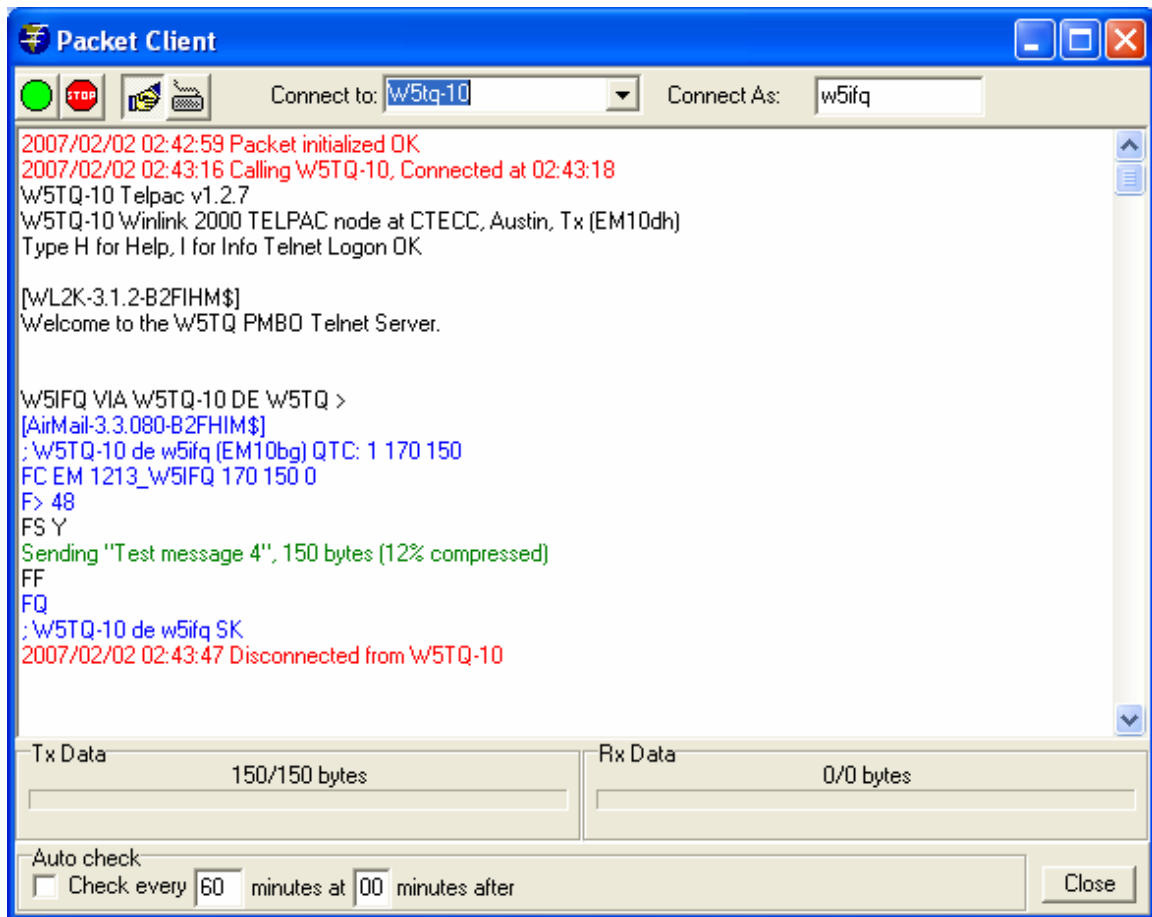
Connect As: W5OEM-SSID (put in your station SSID number)

14. When channel is clear, click on the send button (green).

If a connection is achieved, message transmission and disconnection is automatic.



- 15. A complete exchange from pushing the green button to the automatic disconnect by the Packet RMS Relay station is shown below:**



- 16. After disconnection, check the “Out” box to confirm message transmission and check the “In” box for any incoming messages from the Internet. Double click on any unread e-mail and then open any attachments by double clicking on the attachment at the bottom of the e-mail.**
- 17. Go back to #8 and repeat as needed. Note that you must periodically connect to a RMS Relay station like W5TQ-10 in order to get your mail.**

- 18. When the operation is complete, close AirMail and other applications.**
- 19. Open WinPack (wait for script to load)**
- 20. Close WinPack (wait for script to load and WinPack to close).**
- 21. Set FM transceiver frequency to 144.39 MHz.**
- 22. Properly secure the computer.**

Special Notes:

- 1. In the event that the CTECC PMBO loses the Internet, local messages routed through the W5TQ PMBO will be passed normally, i.e. all connecting ARCHES stations can “hub” through the CTECC PMBO. However any e-mail with a destination not using this local connection should be sent to an area RMS Packet still connected with the Internet or relayed via HF Airmail.**

2. Other area RMS Packet stations include:

Grid	EM10bg
Longitude	-97.875
Latitude	30.27083
Limit	50 mi

Database timestamp
2008/10/25 19:00 UTC

Call	Baud	Type	Grid	City	Distance	Bearing	First Heard	Last Heard
144.910 MHz								
N5TW-13	1200	EMCOMM	EM10cm	Georgetown	18	16	today	today
N5TW-13	1200	Public	EM10cm	Georgetown	18	16	1 day ago	today
145.010 MHz								
W2MN-10	1200	EMCOMM	EM10cm	Cedar Park	18	16	1.2 months ago	today
W5LHC-10	1200	EMCOMM	EM10cm	Cedar Park	18	16	3.9 months ago	today
KD4HNX-11	1200	EMCOMM	EM10dm	ROUND ROCK	20	29	3.9 months ago	today
NA5BD-10	1200	EMCOMM	EM10dm	Round Rock	20	29	12 days ago	13 days ago
KB5TWO-10	1200	EMCOMM	EM10em	Round Rock	23	40	1.5 months ago	today
KB5TWO-11	1200	EMCOMM	EM10em	Round Rock	23	40	20 days ago	6 days ago
N5TW-11	1200	EMCOMM	EM10cp	Georgetown	26	10	28 days ago	2 days ago
KD4HNX-10	1200	Public	EM10dp	ROUND ROCK	28	20	3.9 months ago	today
N5EXY-10	1200	EMCOMM	EM10ho	Hutto	38	52	2.9 months ago	today
W5SEG-10	9600	EMCOMM	EL19an	Seguin	49	186	3.1 months ago	today
145.030 MHz								
N5TW-12	1200	EMCOMM	EM10cp	Georgetown	26	10	3.8 months ago	today
W5RLY-10	1200	Public	EM00vr	Burnet	37	329	3.9 months ago	today
145.070 MHz								
W5TQ-12	1200	Public	EM10dh	Austin	10	73	3.8 months ago	today
145.090 MHz								
W5SEG-10	1200	EMCOMM	EL19an	Seguin	49	186	3.1 months ago	today
145.610 MHz								
N5TW-10	1200	EMCOMM	EM10cp	Georgetown	26	10	3.8 months ago	today
145.730 MHz								
W5TQ-10	1200	Public	EM10dh	Austin	10	73	3.8 months ago	today
KE5RS-10	1200	Public	EM10bn	Leander	20	0	3.9 months ago	today

- 3. Digipeaters maybe used with AirMail, but they significantly slow down the exchange. Enter the first digipeater directly after the “Connect to” station with only a space and no “VIA”. Available digipeaters for the local Telpac stations include:
 - a. **AUSRLY-1 on 145.73 MHz****